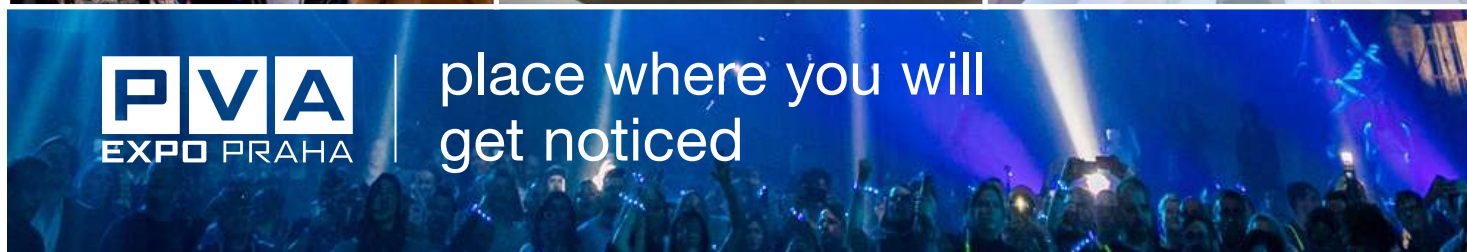


PVA
EXPO PRAHA

place where you will
get noticed



About us



Friendliness
Professionalism
Innovation
Reliability
Partnership



LONG-TERM GOALS

- **Digital Transformation and Innovation:**
Development of digital platforms and technologies for trade fairs, exhibitions and conferences, including hybrid ones, to expand the reach of events and the engagement of international participants.
- **Sustainability and Environmental Responsibility:**
Implementation of sustainable practices and technologies within trade fair, exhibition and congress activities and within the fair grounds to improve the environmental profile of the company.
- **Event Development and Diversification:**
Identification of new trends and market opportunities to expand the portfolio of trade fairs, exhibitions and

- congresses, including specialized events for fast-growing sectors.
- **International Expansion and Partnerships:**
Building strategic partnerships with international organizations and trade fair companies to increase global reach and international participation in events.
 - **Education and professional development both within and outside the company:**
Offering educational programs, workshops, and seminars during trade fairs and exhibitions to raise awareness of the trade fair industry.



ABF'S MISSION

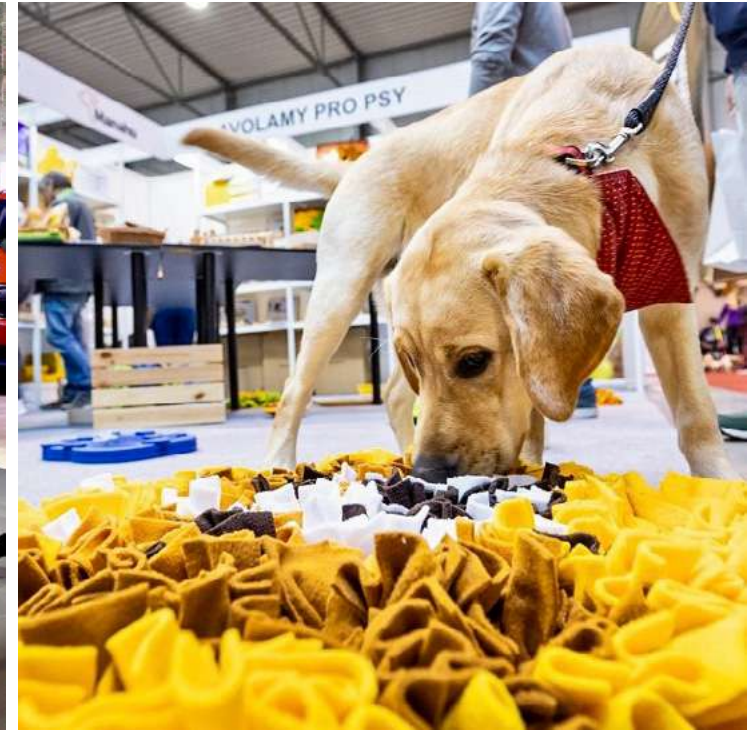
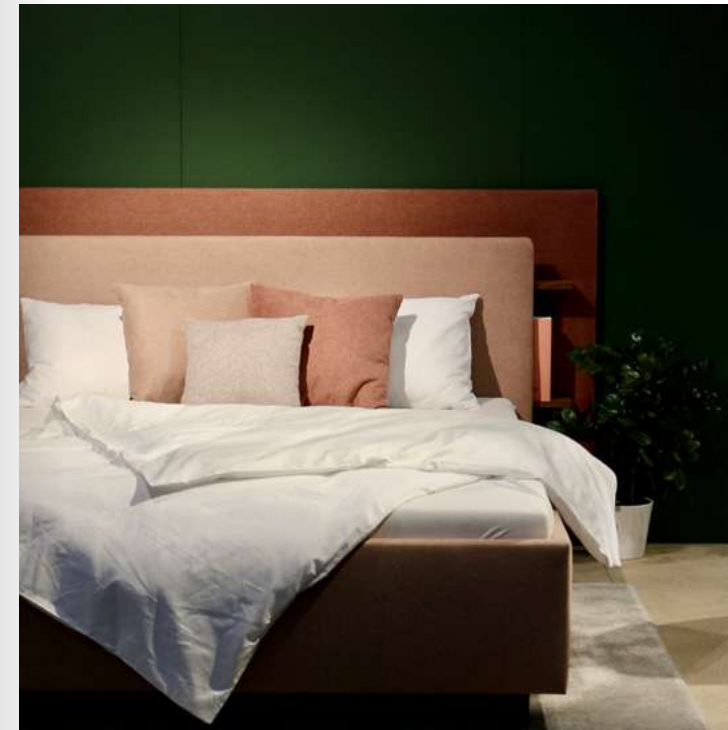
is to support domestic industry and key industries in Central Europe. The company is actively involved in the development and strengthening of the competitiveness of local businesses not only on the domestic market but also on the international level. It also provides opportunities for establishing and deepening business partnerships and provides an environment for presenting products and services. PVA EXPO PRAGUE is an ideal place for business, entertainment and meetings, where business and social activities intersect. With an emphasis on sustainable and long-term development, ABF and PVA EXPO PRAGUE minimize the environmental impact of events and support sustainable initiatives.

ABF'S VISION

is focused on creating and building the trade fair, event and congress industry and culture in the region. Strengthening its leading position in the field of organizing trade fairs and providing high-quality and innovative services that support the success and growth of our customers and partners. A key part of the vision is the effort to enter foreign markets where the company seeks to expand its operations and international influence.

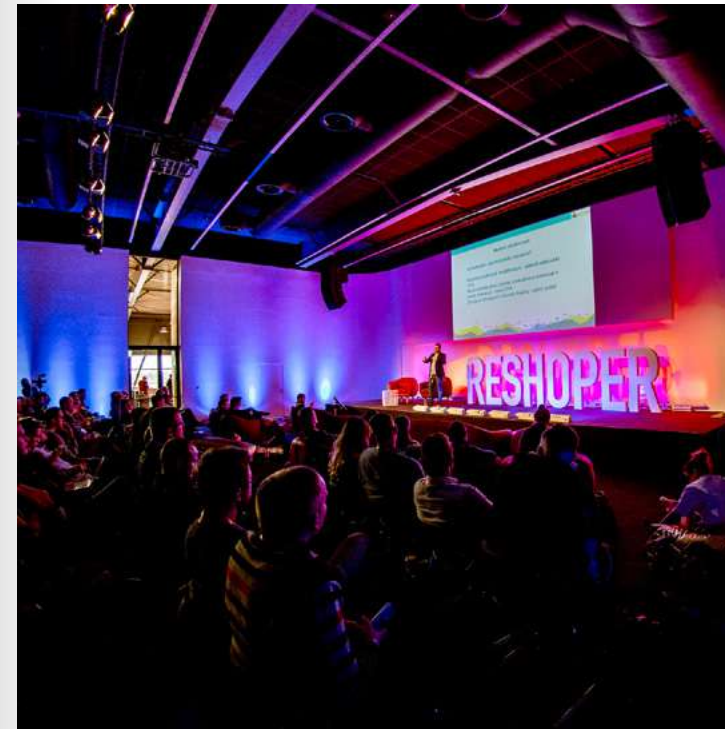
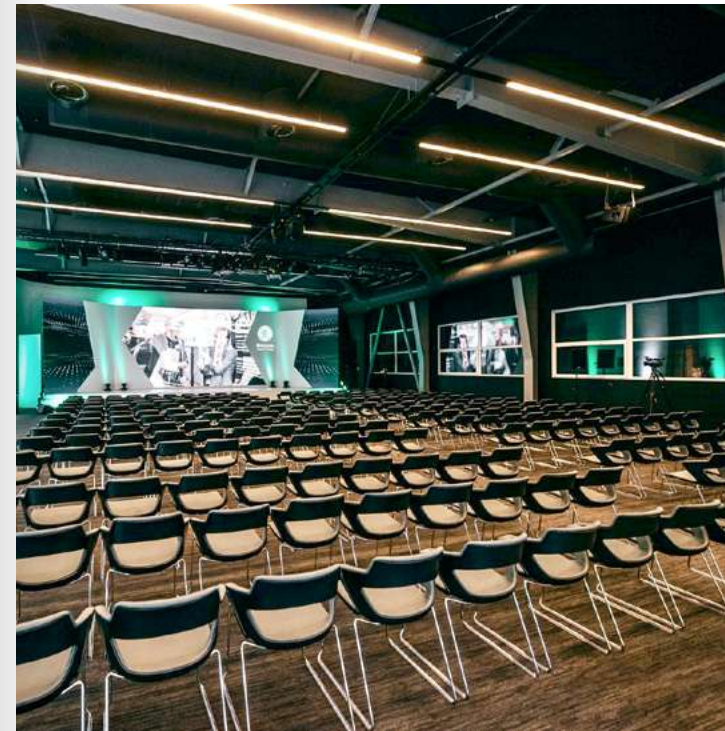
Trade fairs

- the most modern and the largest multifunction exhibition centre in Prague
- total surface area of 105 000 sq m
- 8 modern steel halls with a total surface area of 37 000 sq m
- lighting ramps and other components can be hung down from the roof structure of halls. In one hall with surface area of 4 000 sq m components up to 80 tons can be hung down from the ceiling
- halls allow to expose extremely large and heavy exhibits from 40 up to 50 tons per one exhibit
- the width of halls is 40 m, the clear height is up to 9 m
- the clear height is up to 6 m entrance gates
- technical connections / fixtures according to the requirement of exhibitors
- outdoor surface area of 10 000 sq m
- excellent accessibility (D8 highway from Teplice, Dresden and Berlin)
- excellent accessibility by public transportation means (metro, bus close to venue)
- car park with capacity 3 000 cars and 300 m P+R
- possibility of accommodation in a hotel located directly in the PVA EXPO PRAHA site and in other partner hotels
- organized trade fairs f.i.: FOR ARCH, FOR BIKES, FOR FISHING, E-SALON, AQUATHERM, CANNAFEST, HOLIDAY WORLD, PRAGODENT, MOTOCYKL, BTC PRAGUE



Congresses

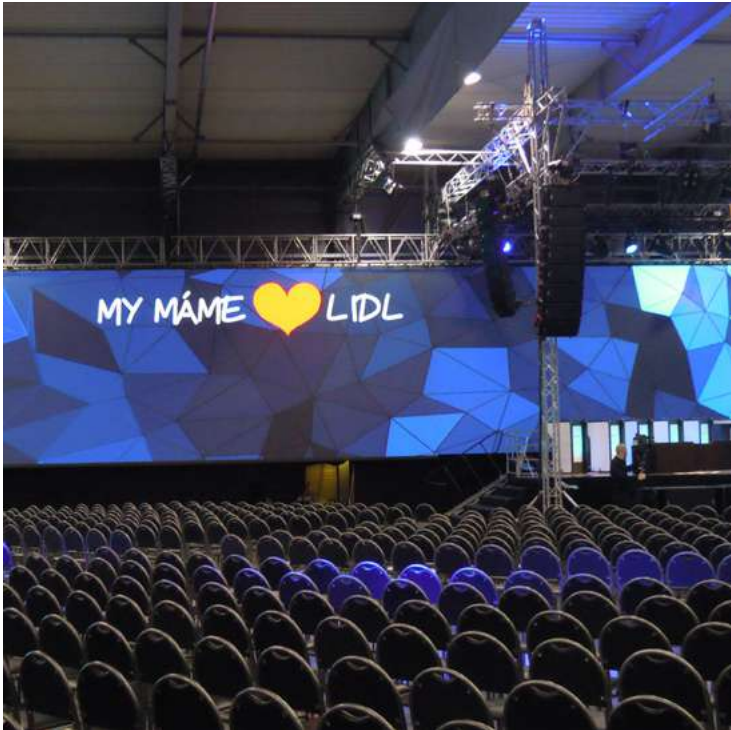
- 2 Congress halls seating up to 600 people, possibility of various arrangements: theatre, classroom, banquet layout
- strategically situated on the 1st floor in Entrance Hall I and III possibility of further interconnection with exhibition halls
- spacious foyers suitable for gala dinners, accompanying program and presentations stands of partners
- modern audiovisual equipment with AMX control system, wide – widescreen HD projection or LED screen, options for adding AV technology and using mapping
- day lighting with the option of shading
- air conditioning
- barrier-free access
- big walk-through facility behind the podium, cloakroom, storage boxes, lift
- modern conference facilities with a capacity of 30 up to 200 people in Entrance Halls I, II, and III
- new catering facilities in Entrance Halls I, II, and III and catering services
- large conference halls for up to 3 000 people can be built in exhibition halls
- possibility of accommodation in a hotel located directly in the PVA EXPO PRAHA site and in other partner hotels of guests from hotels
- car park with capacity 3 000 cars and 300 m P+R
- previously held congresses f.i.: Škoda Auto, DELL, Honeywell, Mercedes, BTC Prague



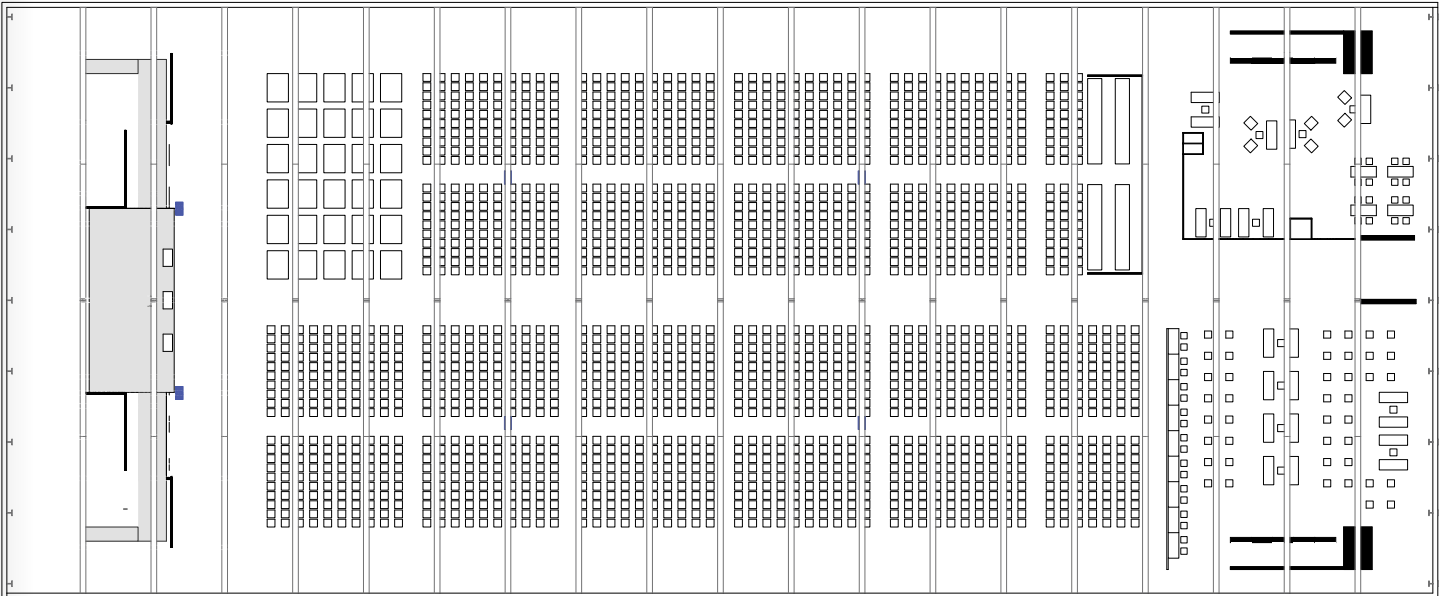
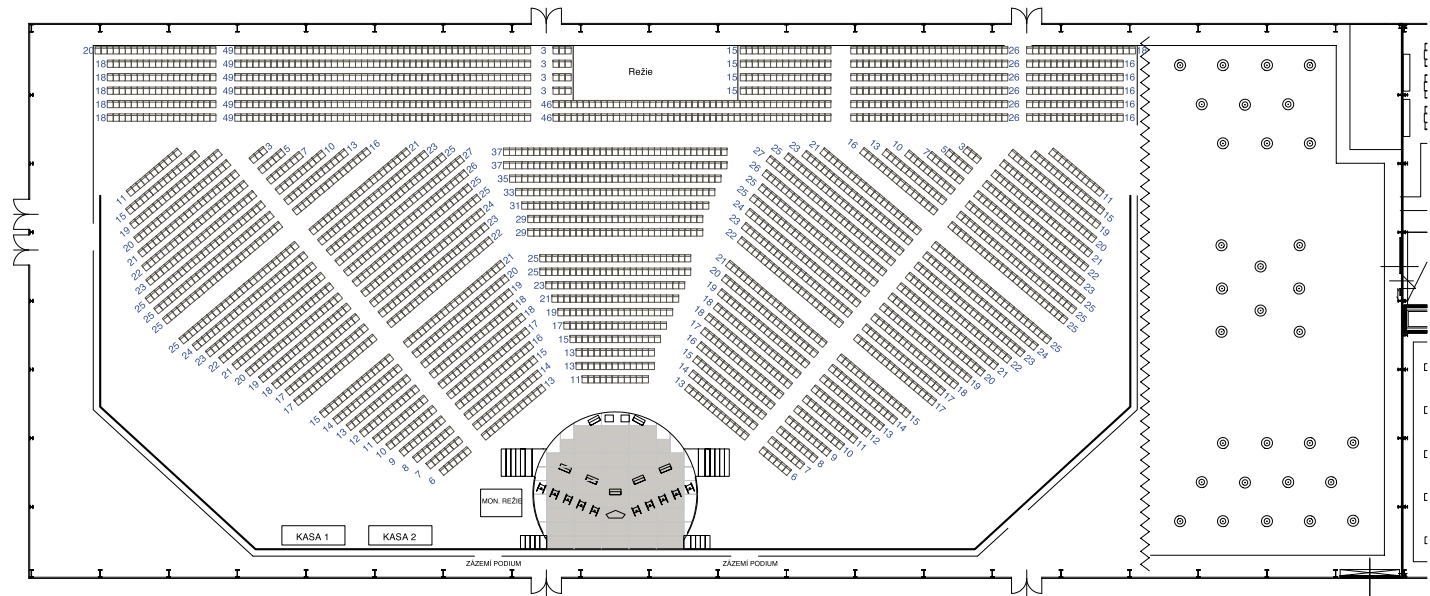
Congresses

EXAMPLES OF CONFERENCE ARRANGEMENTS IN EXHIBITION HALL 3

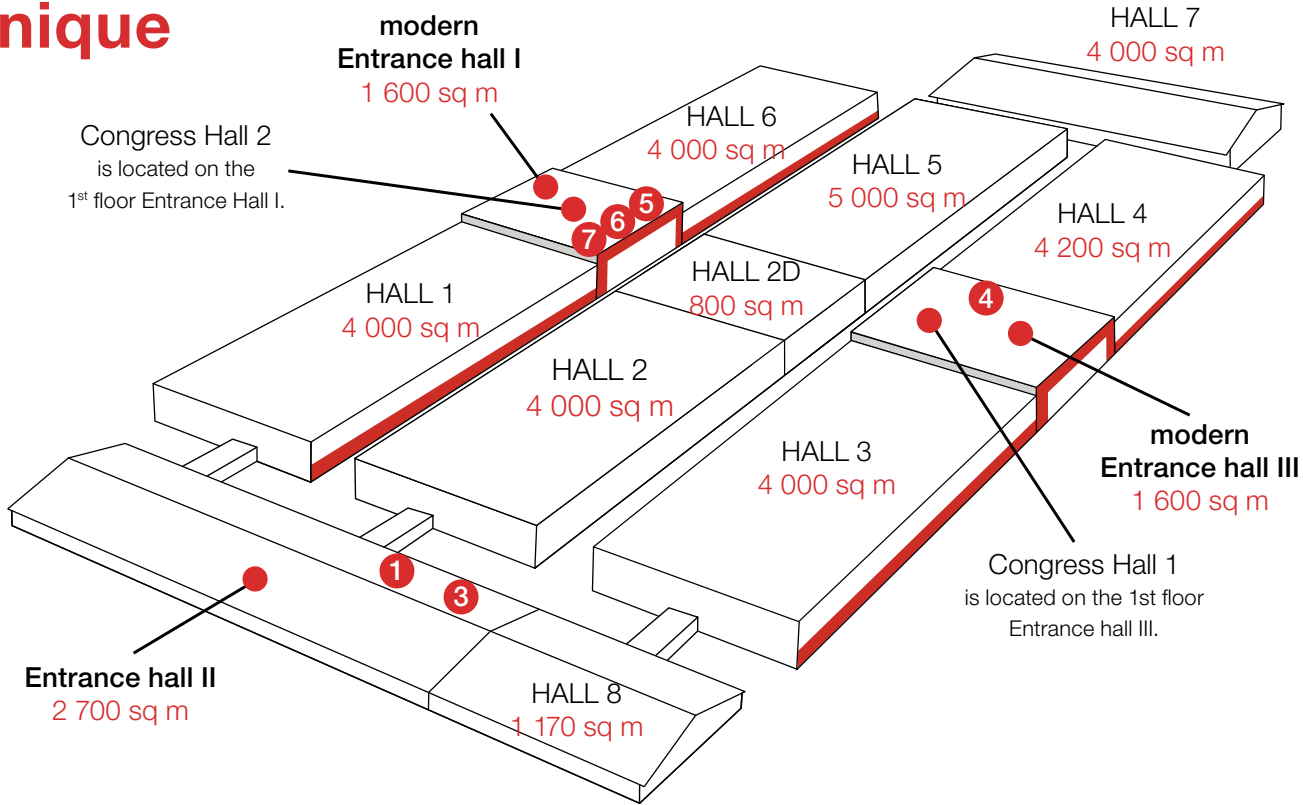
- hall size 4000 sq m (40 × 100 m)
- hall height 9 m
- total 3200 seats in theater layout
- chairs width 440 mm, depth 530 mm, distance between rows = 450 mm
- stage
- LED screens along the entire length of the hall



- hall size 4000 sq m (40 × 100 m)
- hall height 9 m
- total 2000 seats in theater layout
- space supplemented with lounge zones with sofas, catering zones, etc.
- stage
- LED screens – on the main stage + additional screens suspended from the roof structure of the hall



Technique



AV equipment in Congress Hall 2 in VH I

PROJECTION TECHNOLOGY

- Data projector FullHd8000AnsiLm
- LED wall p2.8 resolution 2288 × 1232
- Video matrix Bluestream, presentation notebook, presenter

STAGE LIGHTING

- 8× GLP Impression
- 8× LED stage light (4 per position)
- preset scenes

SOUND SYSTEM (HALL + FOYER)

- 2–4 active EAW NT59 speakers
- 16 audac ceiling speakers
- digital matrix
- 6 microphone sets
- external sound from a PC or other source
- 8 Bosch cabinet speakers

AV equipment in conference rooms 5 and 6 in VH I

- 65" 4K screen and sound system in each room
- 1x handheld microphone, 1x headset

AV equipment in conference room 7 in VH I

- 2× projector 1920×1080, 5800 ANSI
- 2× screen 16:9, 400×225 cm
- preview monitor 43"
- sound system, 8× speakers PS-P83T, 2× subwoofer PS-P83WT, DSP 2-750 MKII amplifier, 2× hand microphone, 2× headset
- laptop – Win 11, Office 2021
- directing equipment – SoundCraft Ui16 sound console, BLACKMAGIC DESIGN ATEM MINI EXTREME video
- stage lighting – 8 pcs of TMH-H240 lights

Technique

AV EQUIPMENT IN CONGRESS HALL 1 IN VHIII

PROJECTION TECHNOLOGY

- 16:9 projection (can be upgraded to 32:9)
- data projector 11,000 ANSI LM, WUXGA, including lens
- data switch, presentation remote control, presentation laptop
- 9 × 3.6 m screen, necessary infrastructure cabling

STAGE LIGHTING

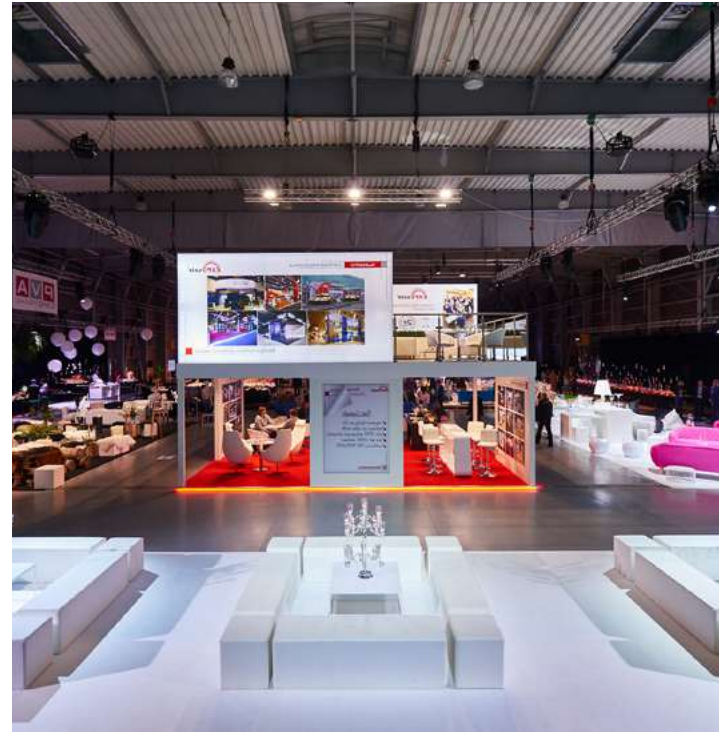
- fresnel reflector 1000 W – 6 pcs
profile reflector 750 W – 4 pcs
- dimmer, control console

SOUND SYSTEM

- active Line Array speakers – podium – 6 pcs
- active Line Array speakers – Delay rear part – 4 pcs
- active Subwoofer “18” – 4 pcs
- digital stage box, digital mixing console
- wireless microphone set
(2 pcs hand, 2 pcs headset)
- PC connection to the audio system
- necessary infrastructure cabling

AV equipment in conference room 1 in VHII

- Panasonic PT-VZ585 projector, 5000 ANSI lumens
- 3200 × 2000 frame screen (16:10)
- SOUNDCRAFT Ui 16 sound mixer
- 2× SENNHEISER handheld wireless microphone
- 2× SENNHEISER headset wireless microphone
- 2× 12“ Apart MASK 12-BL speaker
- DELL Vostro 15 projection laptop – P62F001



Corporate events

- The variability of the area allows for the organization of tailor-made corporate events: parties, conferences, seminars, award ceremonies and surveys, filming of advertising spots, balls, fashion shows, presentations of new cars...
- 8 modern steel halls ranging in size from 800 sq m up to 4,200 sq m
- possibility of hanging complex elements and lighting ramps on the roof structure. In one hall of 4,000 m² up to 80 tons can be hung from the ceiling.
- halls allow for the display of extremely large and heavy exhibits (40–50 tons per exhibit)
- hall width 40 m, the clear height up to 9 m
- the clear height of entrance gates is up to 6 m
- providing refreshments for daytime events within the entrance halls and also providing catering for evening events
- possibility of accommodation in a hotel located directly on the PVA EXPO PRAGUE area and in other partner hotels
- previously held events: DEK, Mercedes, John Deere, F&F, Škoda Auto, IQOS, Lidl, Albert



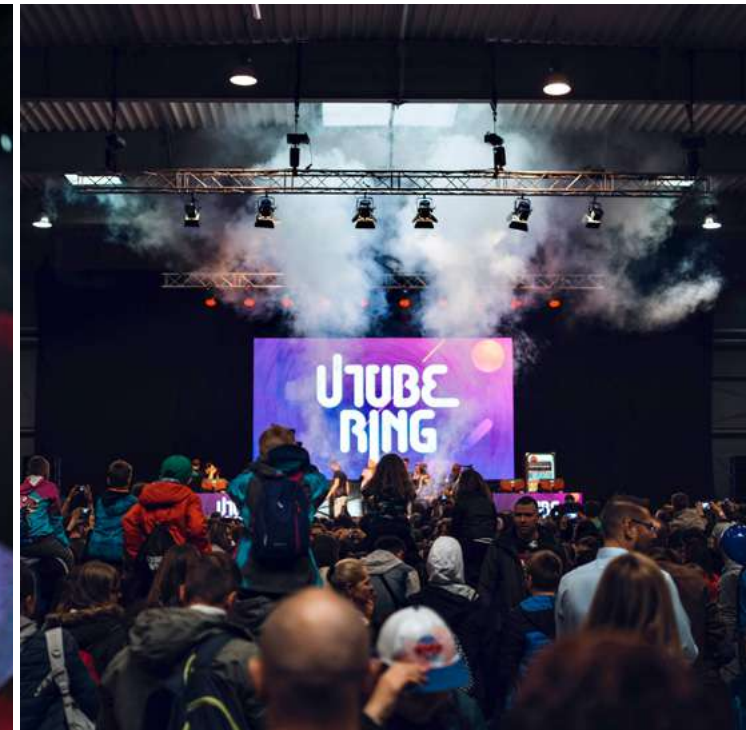
Exhibitions

- possibilities to arrange long-term exhibitions in the summer and winter months
- 8 modern steel halls, surface area from 800 sq m up to 4 200 sq m
- establishing of tradition – possibilities of annual repeat of the exhibition
- taking advantage of increased visitor numbers thanks to concurrent events on the premises
- excellent technical facilities for organizers (premises for registration, representative office premises, restaurants, cafés, cloakrooms, press centre, business centre)
- excellent accessibility (D8 highway from Teplice, Dresden and Berlin)
- excellent accessibility by public means (metro, bus close to venue)
- car park with capacity 3 000 cars and 300 m P+R
- previously held exhibitions: Titanic, Brick republic, Prague car Festival, Exhibition of tents, Exhibition of dogs, Tutankhamun



Culture and sport

- big variability of venue allows to arrange culture and sport events
- 8 modern steel halls, surface area from 800 sq m up to 4 200 sq m
- 3 entrance halls for smooth visitor check-in including restroom facilities
- great refreshments in all entrance halls
- excellent accessibility (D8 highway from Teplice, Dresden and Berlin)
- excellent accessibility by mass urban transportation means (metro, bus close to venue)
- car park with capacity 3 000 cars and 300 m P+R
- Accommodation available at a hotel located directly on the premises of PVA EXPO PRAHA and at other partner hotels
- previously held: Utubering, Prague Handball Cup, dart tournaments PDC, EVLS PRAGUE



Gastronomy



GASTRO ESTABLISHMENTS IN ENTRANCE HALLS

- in Halls I, II and III there is Clara Café (Costa Coffee) with great coffee and delicious snacks
- in Halls II and III there is a brand new Puzzle Restaurant, where you can create your own menu

ABF CATERING

- operator of all catering operations in the entrance halls and outdoor stands
- tailor-made catering for events and company parties
- will provide all daily refreshments in the exhibition halls, at conferences and other events
- can serve up to 2,000 people per hour in its restaurants
- the menu is adapted to each trade fair according to its focus
- offers a wide range of dishes that take into account current gastronomic trends
- ensures efficient logistics and smooth service even with high attendance



Accommodation

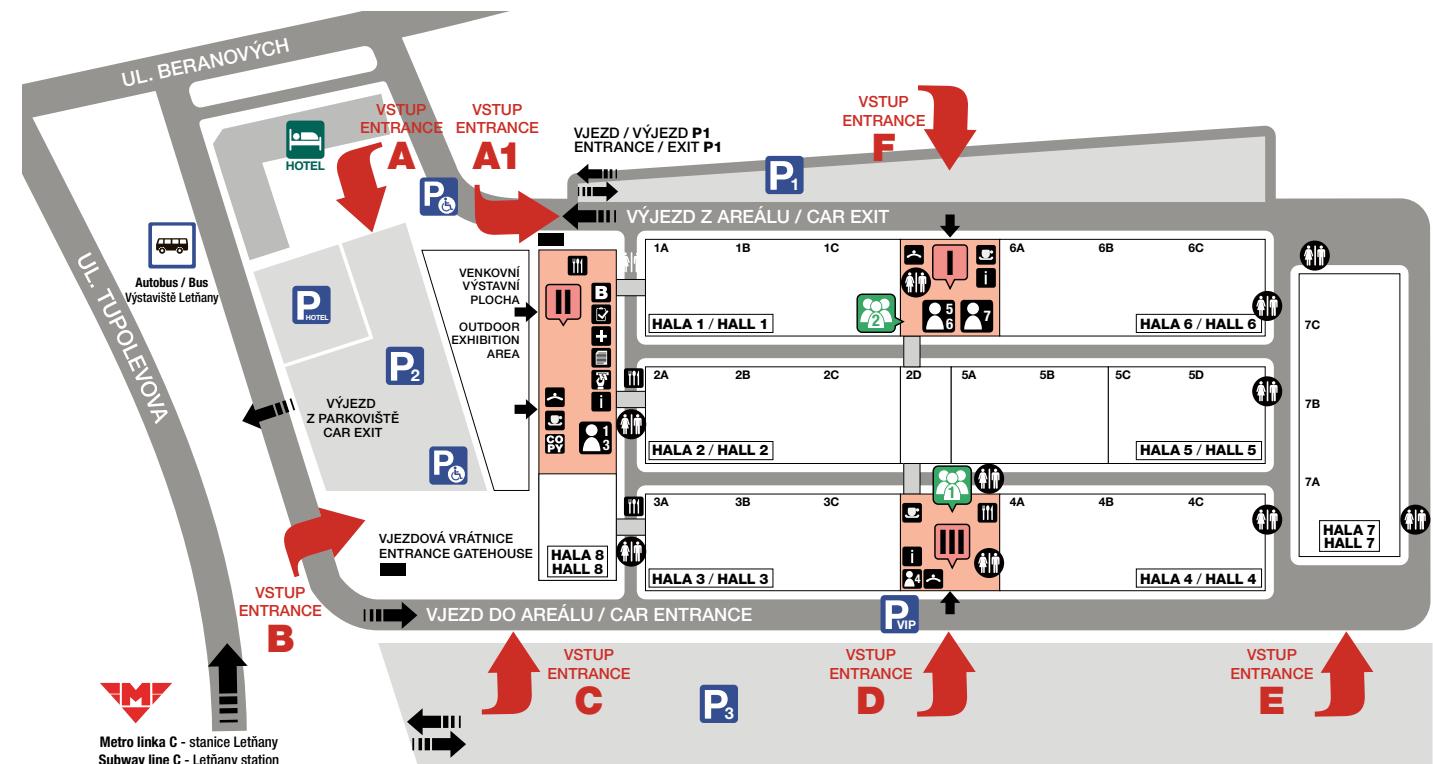


- excellent transport accessibility
- 4 floors
- 105 double rooms
- modern and functional interiors
- parking, restaurant, lobby
- adjoining administrative building
- modern office space

For more information, visit www.we-hotels.com.



Capacity of halls



- I

Vstupní hala I / Entrance Hall I
- II

Vstupní hala II / Entrance Hall II
- III

Vstupní hala III / Entrance Hall III
- Kongresový sál (1. patro Vstupní haly I a III)

Kongress Hall (1st floor in the Entrance Hall I and III)
- Konferenční sály ve Vstupní hale II (sály 1, 3)

Conference rooms in the Entrance Hall II (conference rooms 1, 3)
- Konferenční sál 4 (přízemí Vstupní haly III)

Conference room 4 (ground floor of the Entrance Hall III)
- Konferenční sály (přízemí Vstupní haly I)

Conference rooms (ground floor of the Entrance Hall I)
- I

Informace / Informations
- Registrace / Registration
- P

Parkoviště / Parking Area
- Grafický a veletržní servis CREATIV EXPO

Graphic and Exhibition Service CREATIV EXPO
- Bankomat / ATM Machine
- Šatna / Cloakroom
- WC
- První pomoc / First Aid
- Press centrum / Press Centre
- Business centrum / Business Centre
- Kavárna / Café
- Restaurace / Restaurant



Exhibition hall capacities

		THEATER	SCHOOL	BANQUET
Hall 1	4000 sq m	3000	1800	1300
Hall 2	4000 sq m	3000	1800	1300
Hall 2D	800 sq m	600	360	270
Hall 3	4000 sq m	3000	1800	1300
Hall 4	4200 sq m	3100	1900	1400
Hall 5AB	2600 sq m	1900	1200	850
Hall 5CD	2400 sq m	1800	1100	800
Hall 6	4000 sq m	3000	1800	1300
Hall 7	4000 sq m	3000	1800	1300
Hall 8	1170 sq m	850	530	390

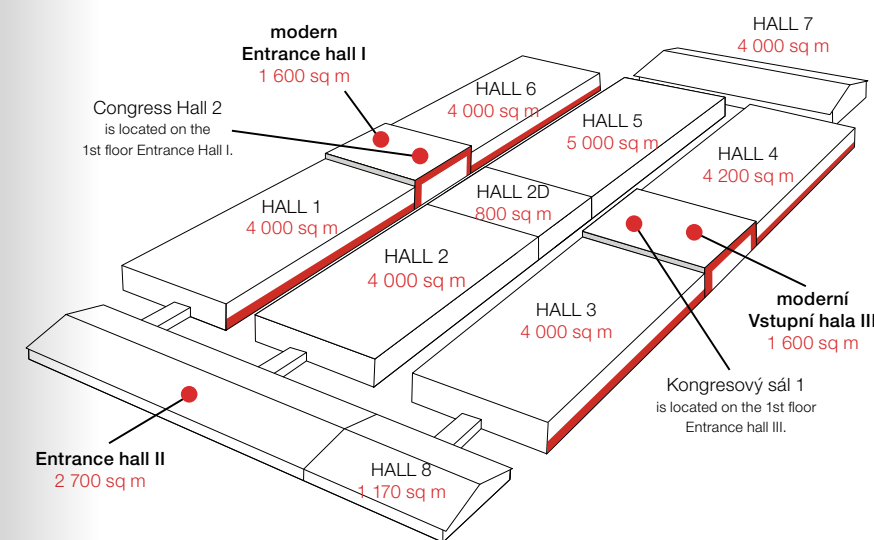
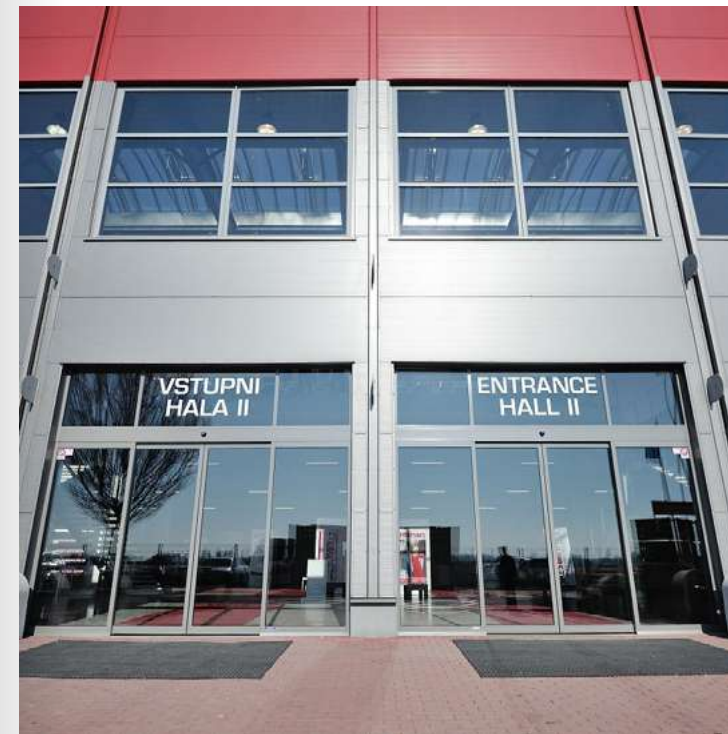
Hall capacities

		THEATER	SCHOOL	BANQUET
Congress halls 1, 2	600 sq m	600	280	380
Foyer	480 sq m			
Conference hall 1	208 sq m	130	70	100
Conference hall 3	48 sq m	30	x	x
Conference hall 4	100 sq m	60	x	x
Conference hall 5	45 sq m	35	x	x
Conference hall 6	50 sq m	35	x	x
Conference hall 7	300 sq m	200	80	100



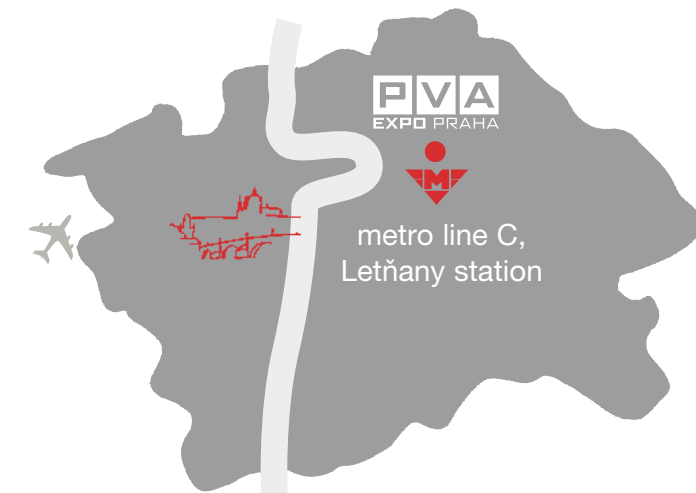
PLACE FOR FAIRS AND EXHIBITIONS

- halls with a size of 800 sq m to 4,200 sq m
- the possibility of hanging complex elements and lighting ramps on the roof structure. In one hall of 4,000 sq m, up to 80 tons can be hung from the ceiling.
- halls allow for the display of extremely large and heavy exhibits (40–50 tons per exhibit)
- hall width 40 m, usable space width up to 9 m
- loading gates up to 6 m high
- connections according to the needs of the exhibitor
- provision of refreshments and catering services
- provision of stand construction
- provision of AV equipment, furniture and other technical equipment for your event
- advance ticket sales
- total exhibition area 105,000 sq m
- 8 modern steel halls with a total area of 37,000 sq m
- outdoor exhibition area 10,000 sq m
- 2 Congress halls
- 6 conference halls
- very good technical facilities for the organizer: sufficient space for registration, representative office space; press center; business center; copy center; restaurant; cafes; changing rooms; ATMs; toilets
- hotel



PVA EXPO Praha

THE LARGEST AND MOST MODERN EXHIBITION CENTER IN PRAGUE



EXCELLENT TRANSPORT ACCESSIBILITY

- D8 motorway from Teplice, Dresden and Berlin
- public transport: metro, buses
- parking in the area for 3,000 cars and at the same time 300 m from the P+R area

EXHIBITION SITE PARTNERS



MEMBERSHIP



PVA EXPO PRAHA
Beranových 667
199 00 Praha 9 – Letňany

info@pvaexpo.cz
www.pvaexpo.cz