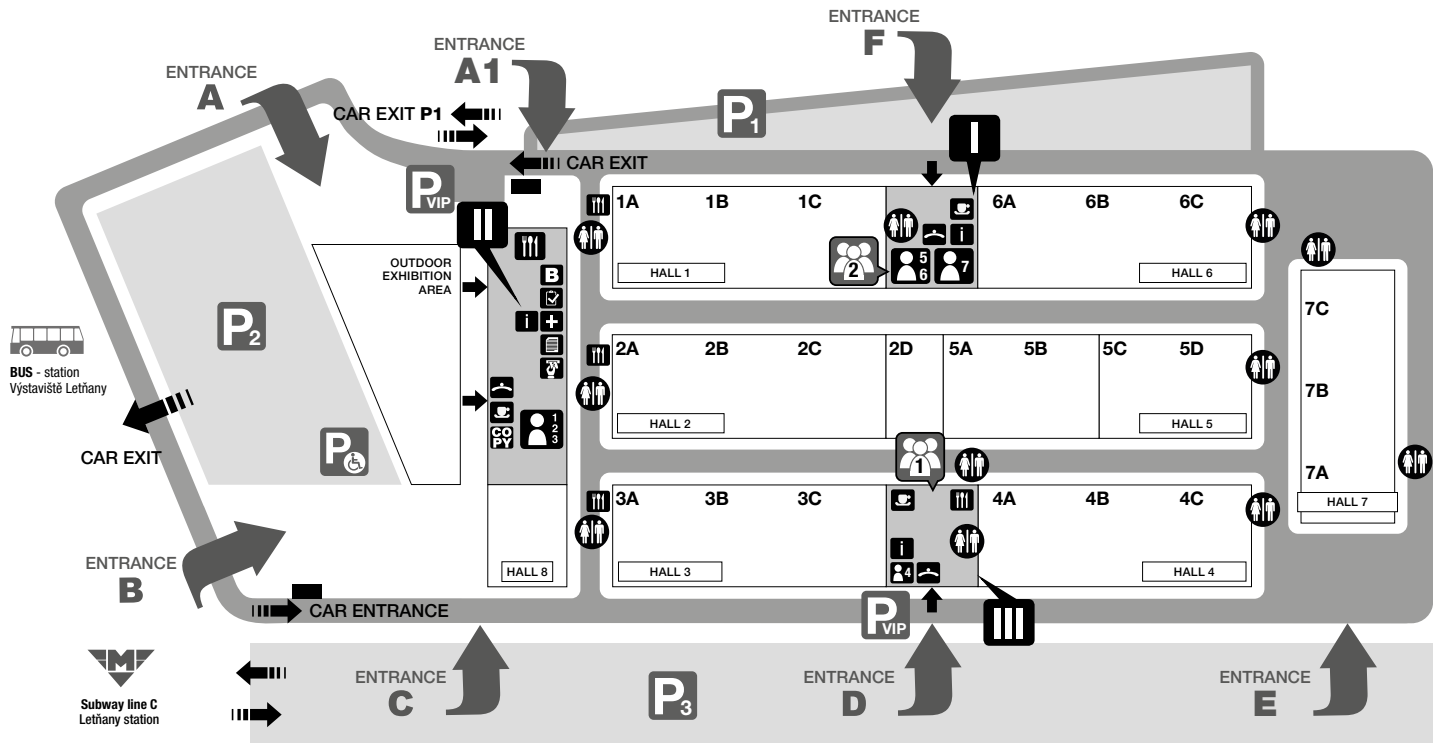


Technical specification



place where you will
get noticed



- I

Entrance Hall I

II

Entrance Hall II

III

Entrance Hall III

2

3

6

7

Congress Hall (First floor in the Entrance Hall I and III)
- 1

2

3

Conference rooms 1, 2, 3 (in the Entrance Hall II)
- 4

Conference room 4 (in the Entrance Hall III)
- 5

6
- Conference rooms 5, 6 (in the Entrance Hall I)

7

Conference room 7 (in the Entrance Hall I)

i

Information

check

Registration

P

Parking Area

GO

Graphic and Exhibition Service CREATIV EXPO

ATM

ATM Machine

cloak

Cloakroom

WC

WC

+

First Aid

B

Press centre

B

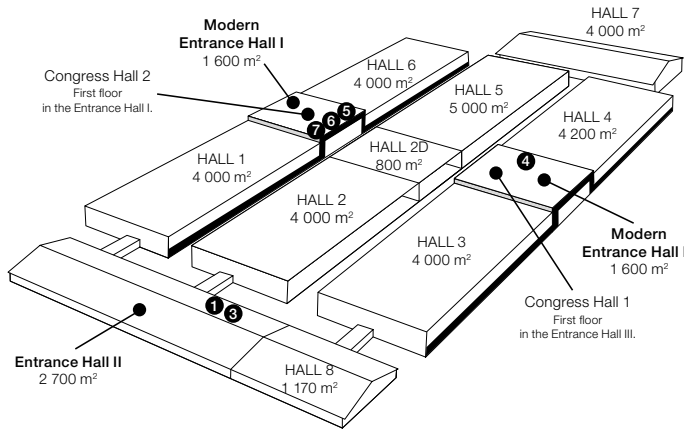
Business centre

C

Café

R

Restaurant

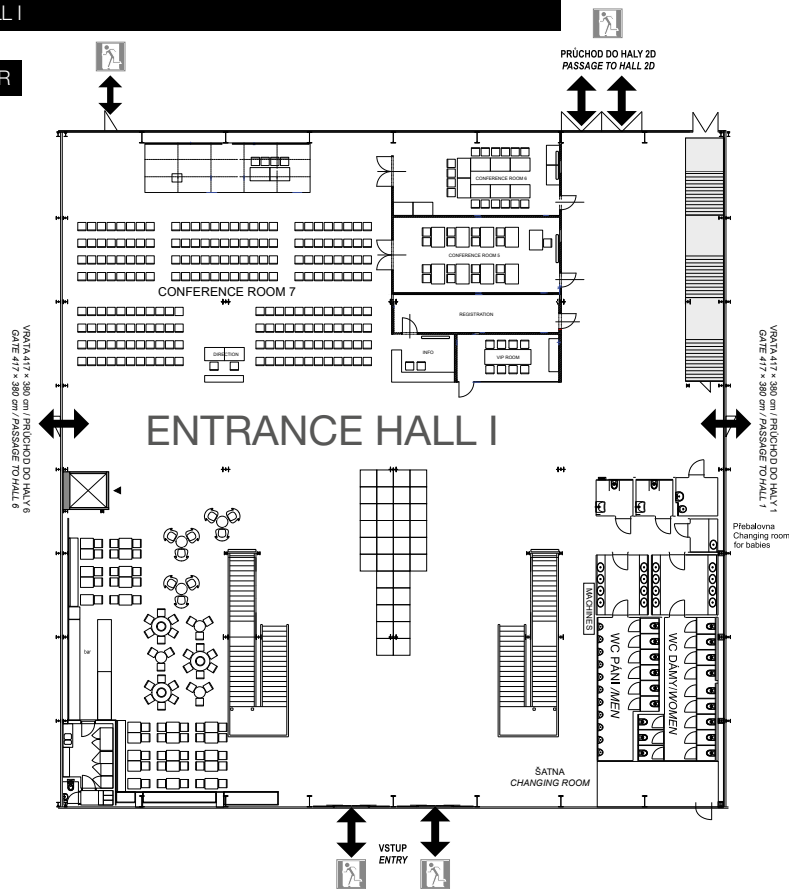


HALL CAPACITY				
		THEATRE	SCHOOL	BANQUET
Hall 1	4000 m ²	3000	1800	1300
Hall 2	4000 m ²	3000	1800	1300
Hall 2D	800 m ²	600	360	270
Hall 3	4000 m ²	3000	1800	1300
Hall 4	4200 m ²	3100	1900	1400
Hall 5AB	2600 m ²	1900	1200	850
Hall 5CD	2400 m ²	1800	1100	800
Hall 6	4000 m ²	3000	1800	1300
Hall 7	4000 m ²	3000	1800	1300
Hall 8	1170 m ²	850	530	390
Congress Hall 1 EHIII	600 m ²	600	280	380
Congress Hall 2 EHI	600 m ²	600	280	380
Foyer	480 m ²			
Conference Room 1	208 m ²	150	70	100
Conference Room 3	48 m ²	30	x	x
Conference Room 4	100 m ²	60	x	x
Conference Room 5	45 m ²	35	x	x
Conference Room 6	50 m ²	35	x	x
Conference Room 7	300 m ²	200	80	100

DIMENSIONS OF HALLS in PVA EXPO PRAGUE				
Building	Gross area	Inner hall dimensions	Inner side height of the hall	Inner central height of the hall
Entrance Hall I	1600 m ²	40 x 40 m	11 m	5 m (build-in floor level)
Entrance Hall II	2700 m ²	30 x 90 m	3,5 m	7,5 m
Entrance Hall III	1600 m ²	40 x 40 m	11 m	5 m (build-in floor level)
Hall 1	4000 m ²	40 x 100 m	9 m	9 m
Hall 2	4000 m ²	40 x 100 m	9 m	9 m
Hall 2D	800 m ²	40 x 20 m	9 m	9 m
Hall 3	4000 m ²	40 x 100 m	9 m	9 m
Hall 4	4200 m ²	40 x 105 m	9 m	9 m
Hall 5	5000 m ²	40 x 125 m	9 m	9 m
Hall 6	4000 m ²	40 x 100 m	9 m	9 m
Hall 7	4000 m ²	40 x 100 m	4,5 m	4,5 m
Hall 8	1170 m ²	30 x 39 m	3,5 m	7,5 m

ENTRANCE HALL I

GROUND FLOOR



Legenda:

- 1 x 1 m (celkový rozměr haly 40 x 40 m)
- digitální panely, obrazovky
- nouzový východ

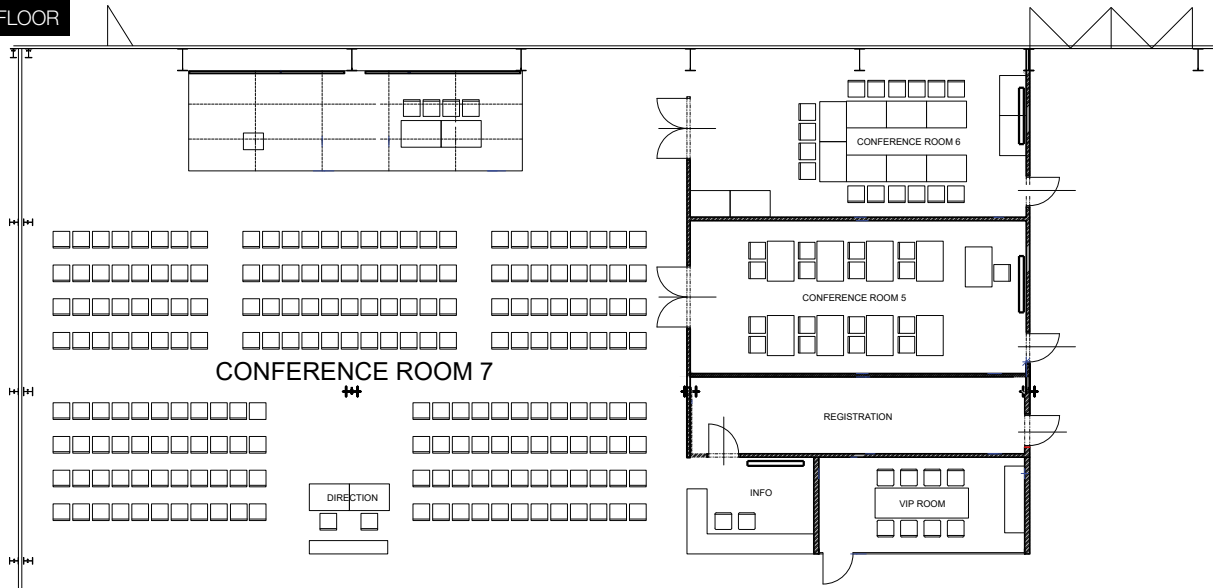
Caption:

- 1 x 1 m (total hall dimension 40 x 40 m)
- digital panels, screens
- emergency exit

ENTRANCE HALL I	
Gross Area	1 600 m ²
Clearance Height	5 m
Technical Entry	From Hall 1
Entry for Personnel and Visitors	Double leaf doors
Floor	Industrial concrete slab
Allowable Bearing Capacity of the Floor	800–1 500 kg/m ² (capacity can be technologically increased, according to requirements of the exhibits)
Installation upon request	connections of water, electric current, internet
Lighting	natural light (glass walls), artificial lights - LED
Heating	air-conditioning
Other Equipment	toilets
	fixed Installation of cafe
	digital advertising panels, information counter

ENTRANCE HALL I – CONFERENCE ROOMS

GROUND FLOOR



CONFERENCE ROOM 5	
Total area	45 m ² (4,5 x 10 m)
Surface area	carpet
Installation	electrical connection 230 V current, internet
Equipment	10 pcs tables, 10 pcs chairs
AV technology	65" 4K screen and sound system, 1 pc hand microphone, 1 pc headset

CONFERENCE ROOM 6	
Total area	50 m ² (5 x 10 m)
Surface area	carpet
Installation	electrical connection 230 V current
Equipment	10 pcs tables, 10 pcs chairs
AV technology	65" 4K screen and sound system 1 pc hand microphone, 1 pc headset

VIP ROOM	
Total area	17,4 m ² (2,9 x 6 m)
Surface area	carpet
Installation	electrical connection 230 V current, internet
Equipment	1 pc table, 8 pcs armchairs

CONFERENCE ROOM 7	
Total area	300 m ² (20 x 15 m)
Surface area	carpet
Installation	electrical connection current
Equipment	podium 3x 10 m, preview monitor, 2 pcs tables, 4 pcs chairs, max. 200 chairs incl. theater arrangement
AV technology	2 projectors 1920 x 1080, 5800 ANSI 2 screens 16:9, 400 x 225 cm preview monitor 43" sound system, 8x PS-P83T speaker 2 subwoofers PS-P83WT amplifier DSP 2-750 MKII 2 pcs hand microphones, 2 pcs headset laptop – win 11, Office 2021 staging equipment – SoundCraft Ui16 sound desk video BLACKMAGIC DESIGN ATEM MINI EXTREME stage lighting – 8 pcs TMH-H240 lights

ENTRANCE HALL I – FOYER OF THE CONGRESS HALL 2

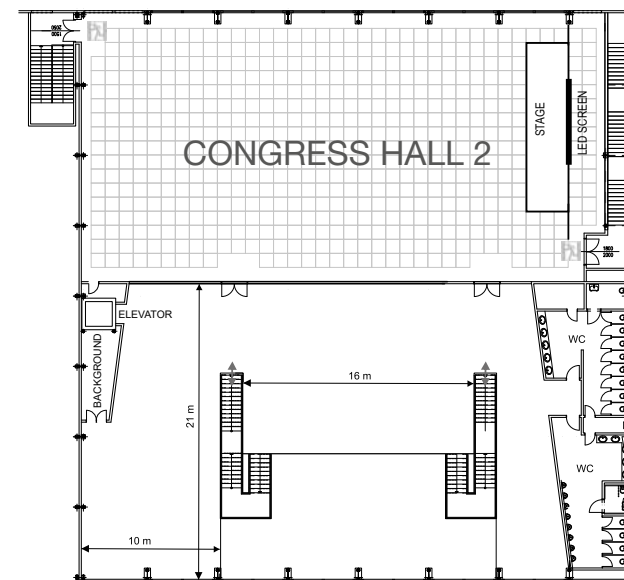
1ST FLOOR



CONGRESS HALL 2



CONGRESS HALL 2



1ST FLOOR

CONGRESS HALL 2

- Congress hall 600 m², foyer 480 m²
- Congress hall with a capacity of up to 600 people, theater, school, banquet arrangement possibilities
- strategically located on the floor in the Entrance Hall I between Halls 1 and 6, possibility of further connection with exhibition halls
- a generous foyer suitable for banquet celebrations, accompanying program and partner presentation stands
- daylight with the possibility of shading
- air conditioning
- barrier-free access
- large-capacity toilets in the foyer

AV EQUIPMENT IN CONGRESS HALL 2 IN EHI*

VIDEO PROJECTION

- Data projector FullHd 8000 AnsiLm
- or LED wall p2.8 resolution 2288 × 1232
- Video matrix Bluestream, presentation notebook, presenter, connection points for inputs and outputs. Hall + foyer

STAGE LIGHTING

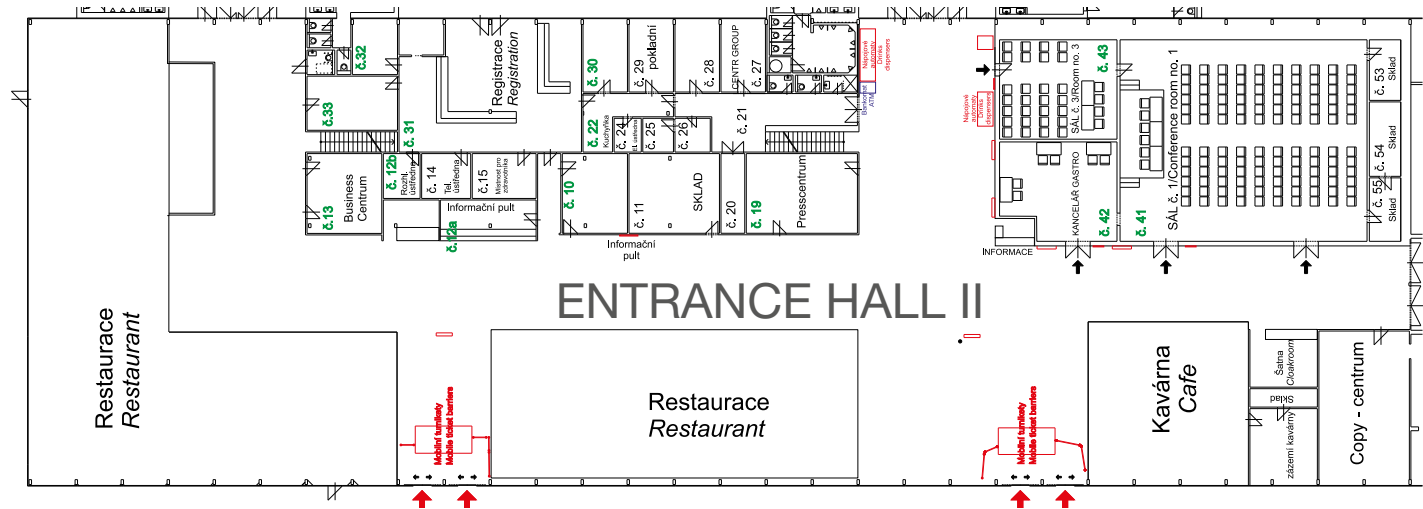
- 8x GLP Impression
- 8x LED stage light (4 per position)
- preset scenes

SOUND SYSTEM

- 2-4 EAW NT59 active speakers
- 16 audac ceiling speakers
- digital matrix
- 6 microphone sets
- external sound from PC or other source
- 8 Bosch cabinet speakers

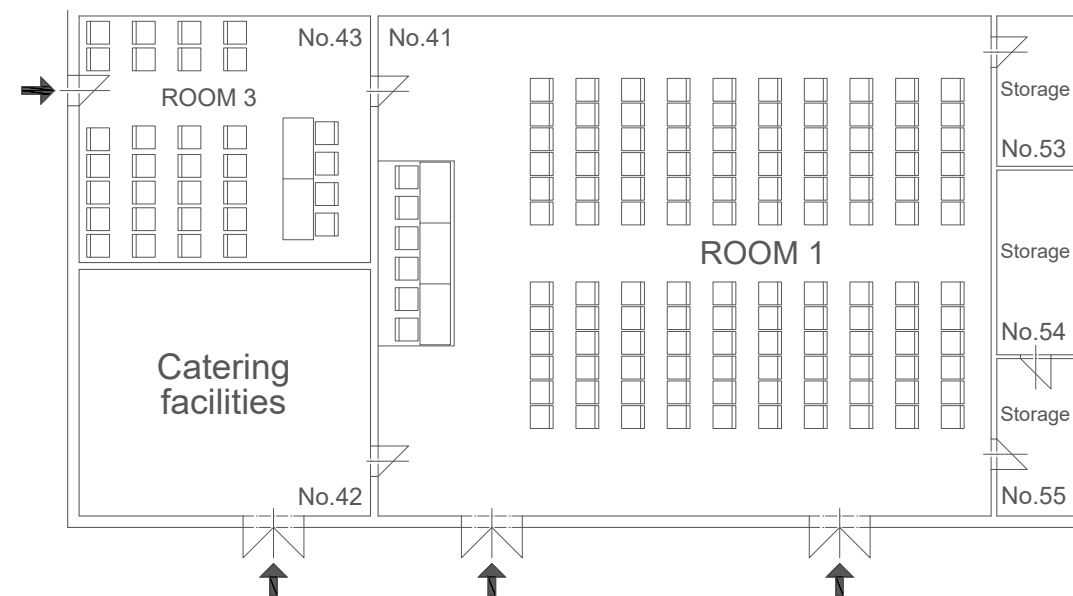
*basic equipment

ENTRANCE HALL II



ENTRANCE HALL II	
Gross Area	2 700 m ²
Clearance Height of the Building	lateral 3.5 m, middle 7.5 m
Technical Driveway	from the Hall 8
Personnel and Visitor Entrances	sliding and double leaf doors
Floor	interlocking tiles, ceramic tiles
Allowable Bearing Capacity of the Floor	800–1 500 kg/m ² (capacity can be technologically increased, according to requirements of the exhibits)
Installation after Consultation	connections of water, electric current, compressed air, telephone, internet
Lighting	natural light (glass walls), artificial lights - LED
Heating	hot water
Ventilation of Halls	yes
Other Equipment	fixed installation of restaurant and snack bar conference center, press center, business center toilets, cloakroom registration with background - offices, Information counter floor built-in offices ATM digital advertising panels copy center radio switchboard the insurance company emergency room

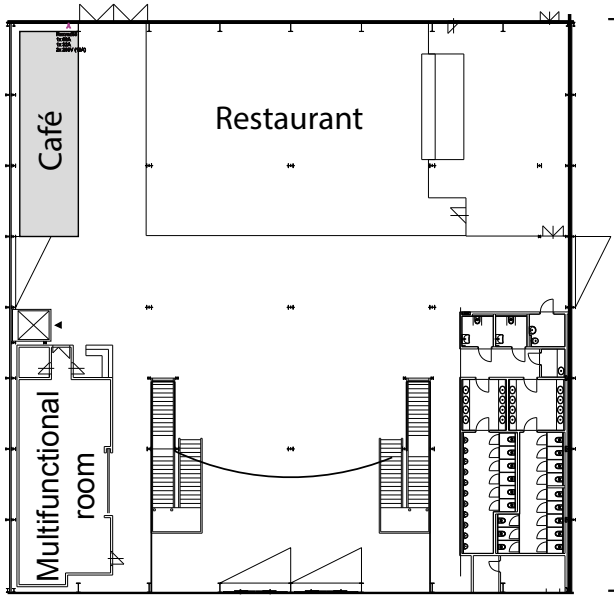
ENTRANCE HALL II – CONFERENCE ROOMS



CONFERENCE ROOM 1	
Total Area	208 m ² (16 x 13 m)
The Area Surface	carpet
Installation	connections of electricity
Equipment	podium, lecture stand, chairs
AV equipment	Projector Panasonic PT-VZ585, luminosity 5000 ANSI Framed canvas 3200 x 2000 mm (16:10) Audio mix SOUNDCRAFT Ui 16 2x hand wireless microphone SENNHEISER 2x wireless headset microphone SENNHEISER 2x speaker box 12" Apart MASK 12-BL Projection notebook DELL Vostro 15-P62F

CONFERENCE ROOM 3	
Total Area	48 m ² (7,5 x 6,4 m)
The Area Surface	PVC
Installation	connections of electricity (230 V), internet
Equipment	tables, chairs

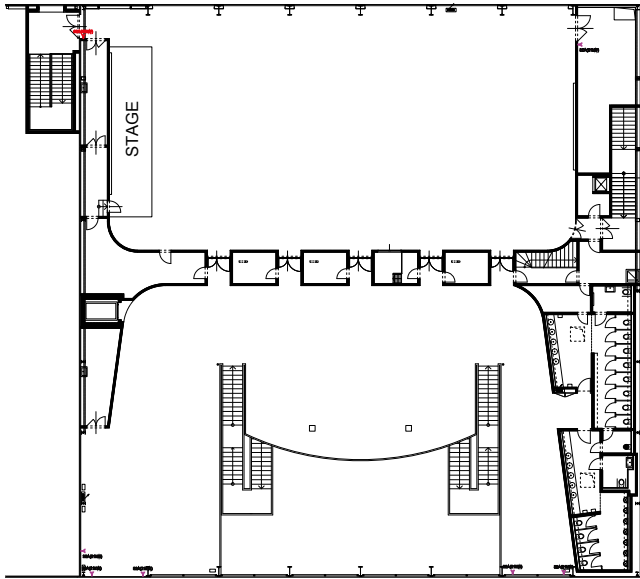
ENTRANCE HALL III



GROUND FLOOR

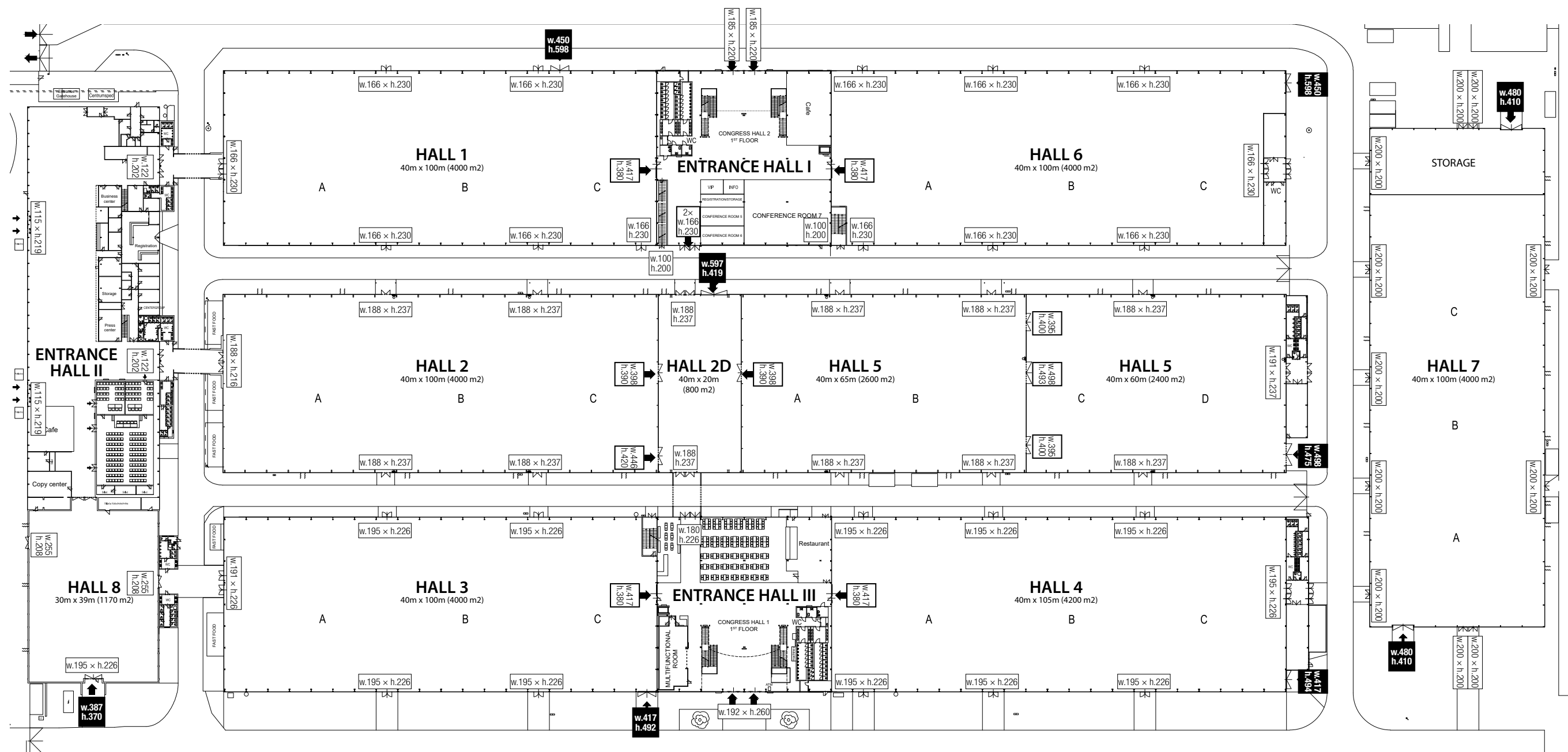
ENTRANCE HALL III	
Gross Exhibition area	1 600 m²
Clearance Height	5 m
Technical Entry	From Hall 3
Floor	industrial concrete slab
Allowable Bearing Capacity of the Floor	800–1 500 kg/m² (capacity can be technologically increased, according to requirements of the exhibits)
Installation	connections of water, electric current, internet
Lighting	natural light (glass walls), artificial light - LED
Heating	hot air, air-conditioning (Congress Hall)
Ventilation	Yes – Multifunctional room
Additional equipment	Fixed restaurant and coffee place
	Toilets, Cloakroom
	Information counter
	digital advertising panels

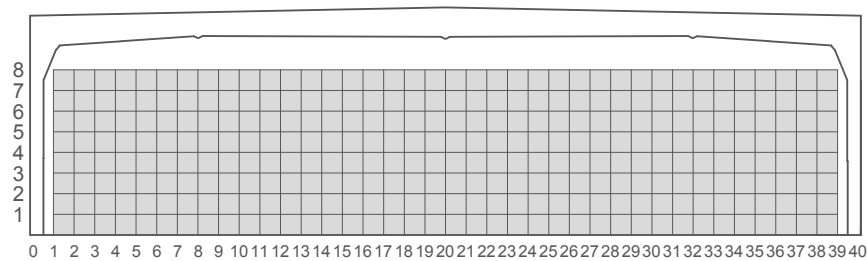
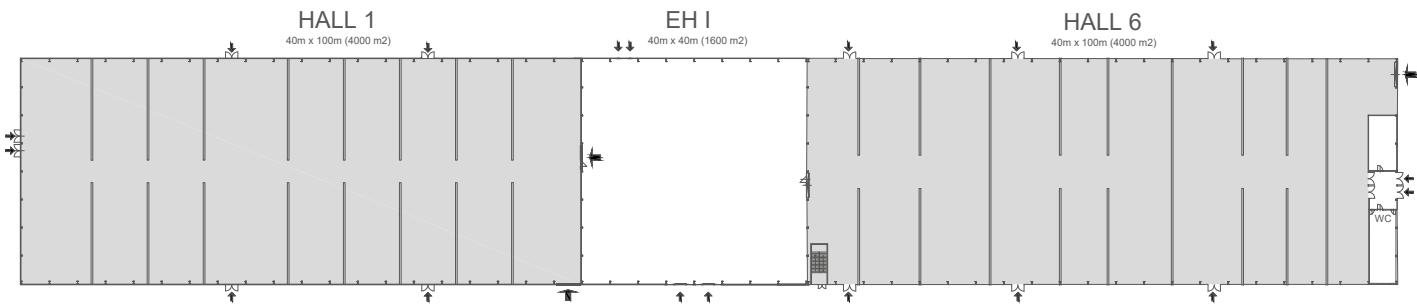
CONGRESS HALL 1



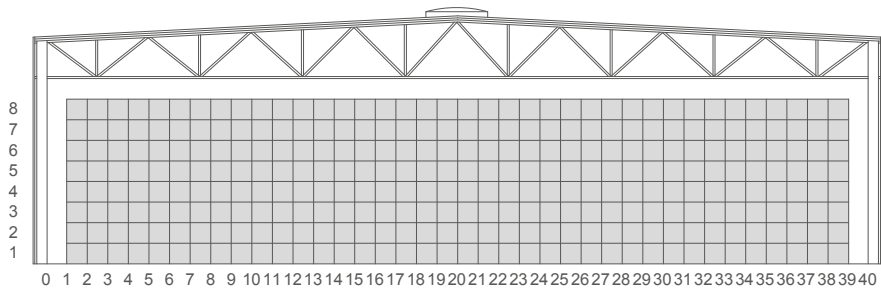
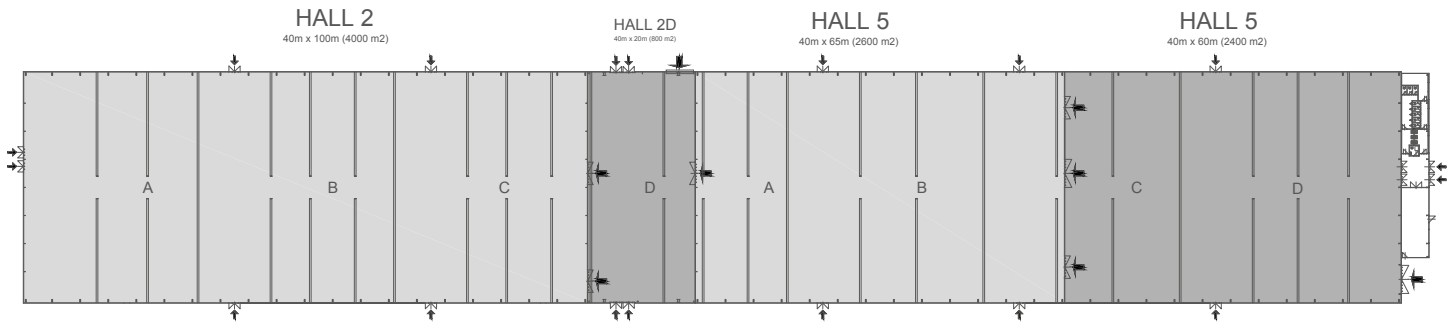
1ST FLOOR

CONGRESS HALL 1	AV TECHNOLOGY IN CONGRESS HALL *)
<ul style="list-style-type: none">• Congress hall 600 m², foyer 480 m²• Congress hall with a capacity of up to 600 people, theatre, school, banquet arrangement possibilities• strategically located on the floor in Entrance Hall III between Halls 3 and 4, possibility of further connection with exhibition halls• a generous foyer suitable for banquet celebrations, accompanying program and partner presentation stands• modern audio visual technology with a control system AMX, widescreen HD projection• the possibility of using the most modern mapping• daylight with the possibility of shading• air conditioning• barrier-free access• large walk-through background behind the stage, dressing room, storage boxes, lift (door width 90 cm)	<p>PROJECTION TECHNOLOGY</p> <ul style="list-style-type: none">• 16:9 projection (can be extended to 32:9)• data projector 20,000 ANSILM, WUXGA, including lens• data switch, remote control of the presentation• presentation notebook• screen 9 x 3.6 m, infrastructure cabling required <p>STAGE LIGHTING</p> <ul style="list-style-type: none">• fresnel reflector 1000 W – 6 pcs• profile reflector 750 W – 4 pcs• dimmer, control console <p>SOUND SYSTEM</p> <ul style="list-style-type: none">• Line Array active speakers – podium – 6 pcs• Line Array active speakers – Delay rear part – 4 pcs• active Subwoofer „18“ - 4 pcs• digital stage box, digital mixing desk• wireless microphone set (2 pcs hands, 2 pcs headset)• connecting a PC to the audio system• necessary infrastructure cabling <p>*) basic equipment</p>



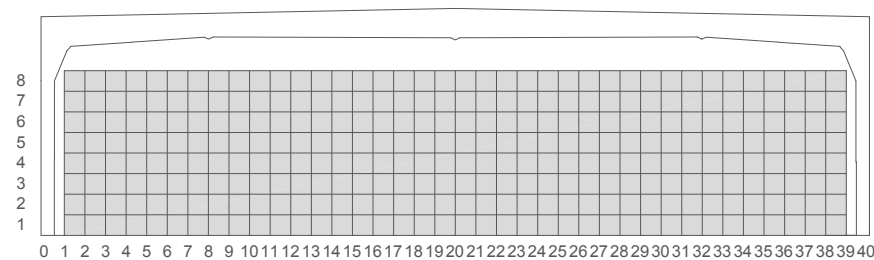
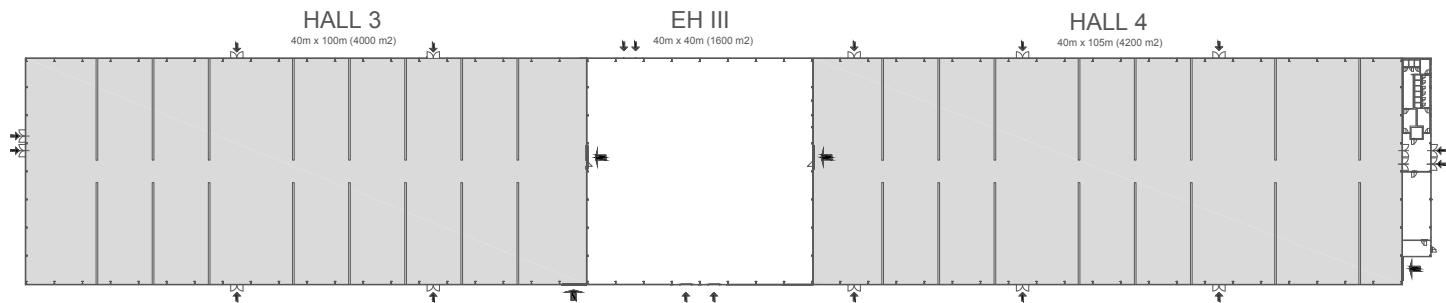


HALL 1 HALL 6	
Gross Exhibition area	4 000 m ²
Clearance Height of the Building	lateral 9 m, middle 9 m
Profiles of Entries	double leaf doors and rolling gate
Floor	industrial polished concrete slab with the gutters, the slope of 1/140 of the length of the hall
Allowable Bearing Capacity of the Floor	800–1 500 kg/m ² (capacity can be technologically increased, according to requirements of the exhibits)
Installation	connections of water, electric current, compressed air, telephone, internet
Lighting	20% natural light – ceiling skylights; artificial light – LED
Heating	hot air gas heating
Ventilation	yes



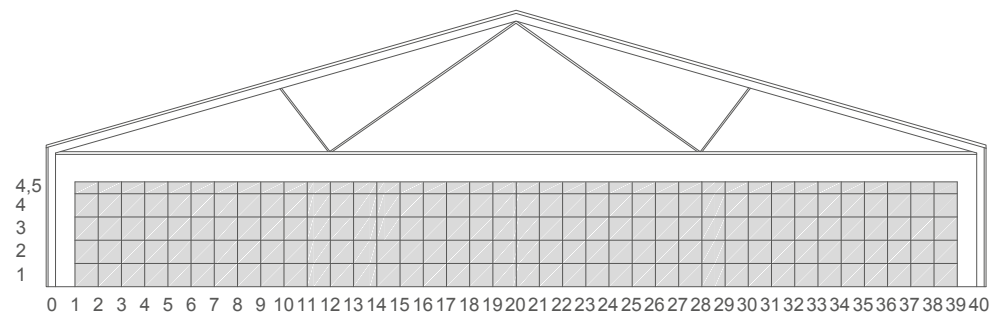
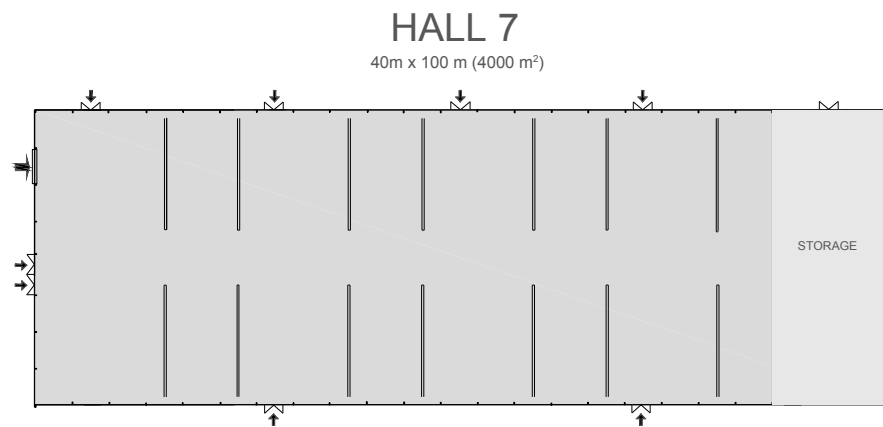
HALL 2 HALL 2D HALL 5	
Gross Exhibition Area	Hall 2: 4 000 m ² Hall 2D: 800 m ² Hall 5: 5 000 m ² (divided into sectors AB 40 m x 65 m and CD 40 m x 60 m)
Clearance Height of the Building	9 m across the entire width
Profiles of Entries	double leaf doors and rolling gate
Floor	industrial polished plastic-concrete slab with gutters, the slope of 1/140 of the length of the hall
Allowable Bearing Capacity of the Floor	800–1 500 kg/m ² (capacity can be technologically increased, according to requirements of the exhibits)
Installation	connections of water, electric current, compressed air, telephone, internet
Lighting	Hall 2: 20% natural light – ceiling skylights; artificial light – LED
	Hall 2D: 35% natural light – ceiling skylights; artificial light – LED
	Hall 5: 20% natural light – ceiling skylights; artificial light – LED
Heating	hot air gas heating
Ventilation	yes

HALL 3 | HALL 4



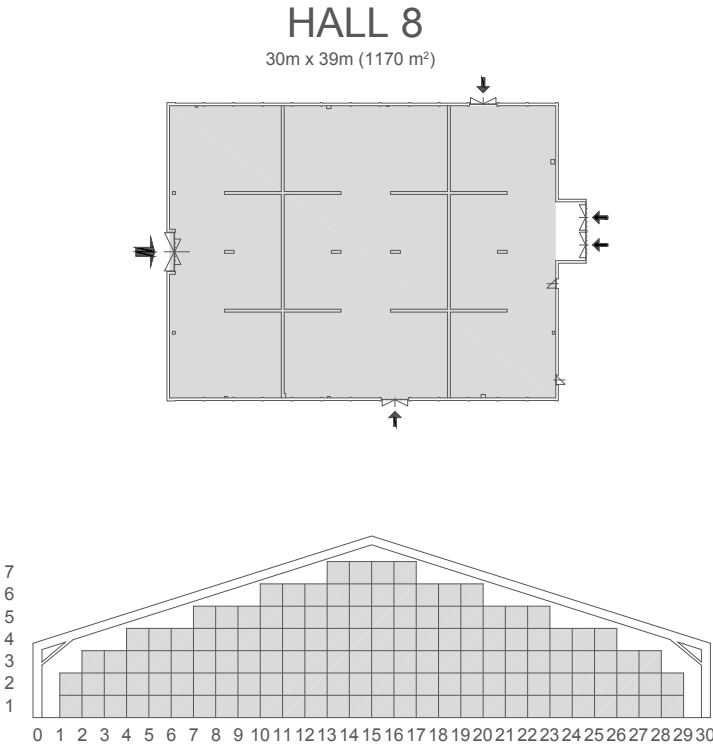
HALL 3 HALL 4	
Gross Exhibition Area	4 000 m² + 4 200 m²
Clearance Height of the Building	9 m across the entire width
Profiles of Entries	double leaf doors and rolling gate
Floor	industrial with gently structural COMFLOOR surface, with gutters; the slope of 1/140 of the length of the hall
Allowable Bearing Capacity of the Floor	800–1 500 kg/m² (capacity can be technologically increased, according to requirements of the exhibits)
Installation	connections of water, electric current, compressed air, telephone, internet
Lighting	20% natural light – ceiling skylights; artificial light – LED
Heating	hot air gas heating
Ventilation	yes

HALL 7



HALL 7	
Gross Exhibition Area	4 000 m²
Clearance Height of the Building	4,5 m
Profiles of Entries	double leaf doors and rolling gate 1x
Floor	industrial polished plastic-concrete slab with gutters
Allowable Bearing Capacity of the Floor	800–1 500 kg/m² (capacity can be technologically increased, according to requirements of the exhibits)
Installation	connections of water, electric current, compressed air, telephone, internet
Lighting	25% natural light – ceiling skylights; artificial light – fluorescent lights
Heating	hot air
Ventilation	yes

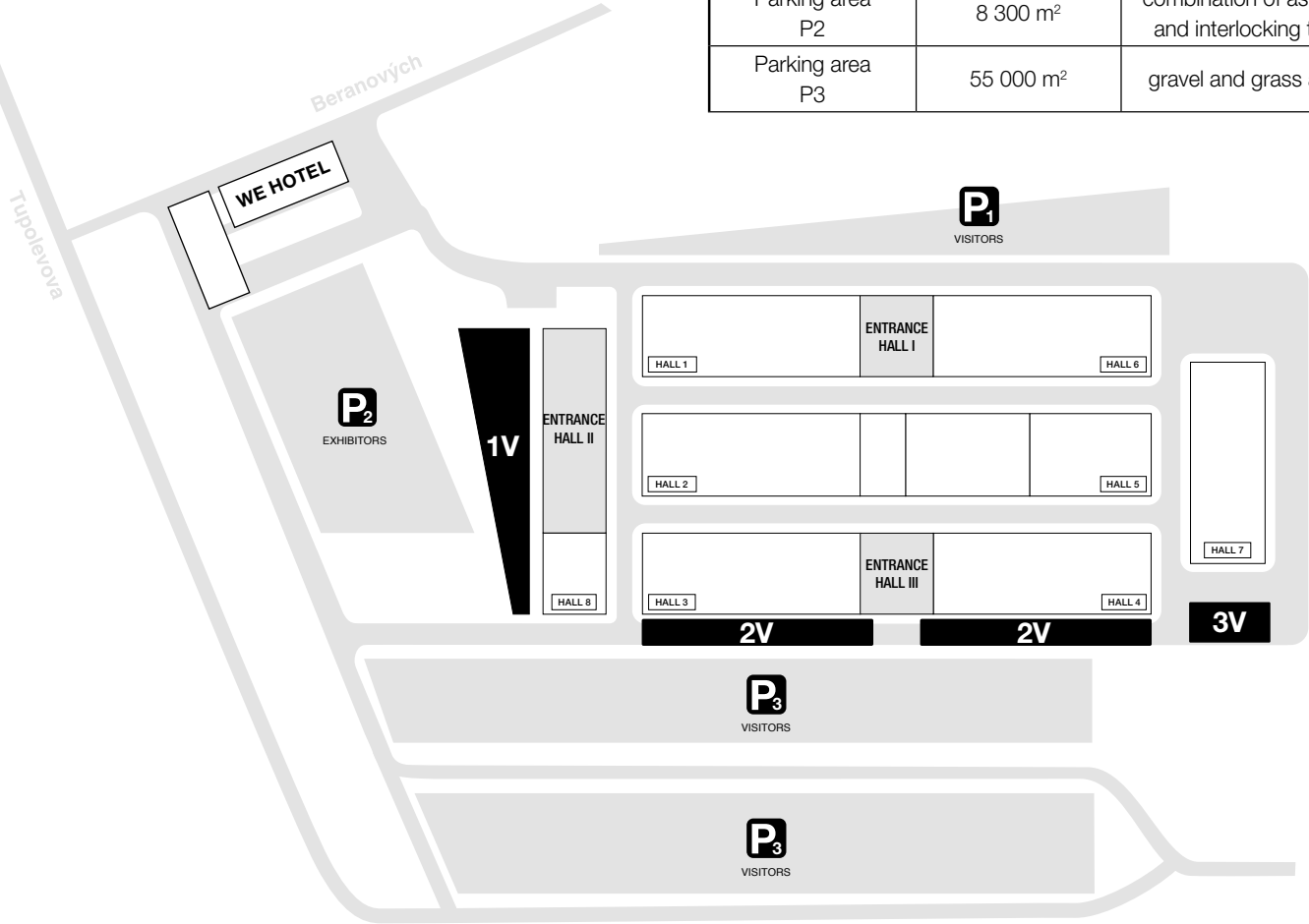
HALL 8



HALL 8	
Gross Exhibition Area	1 170 m ²
Clearance Height of the Building	lateral 3.5 m, middle 7 m
Profiles of Entries	double leaf doors and rolling gate
Floor	industrial polished plastic-concrete slab with the gutters, the slope of 1/140 of the length of the hall
Allowable Bearing Capacity of the Floor	800–1 500 kg/m ² (capacity can be technologically increased, according to requirements of the exhibits)
Installation	connections of water, electric current, compressed air, telephone, internet
Lighting	20% natural light – ceiling skylights; artificial light – fluorescent lights
Heating	hot air
Ventilation	yes

OUTDOOR AREA

OUTDOOR AREA		
	TOTAL GROSS AREA	THE AREA SURFACE
Outdoor area 1V	3 600 m ²	interlocking tiles
Outdoor area 2V	1 330 m ²	interlocking tiles
Outdoor area 3V	800 m ²	combination of gravel and interlocking tiles
Parking area P1	3 000 m ²	hardened surface
Parking area P2	8 300 m ²	combination of asphalt and interlocking tiles
Parking area P3	55 000 m ²	gravel and grass area



EXHIBITION SITE PARTNERS



MEMBERSHIP



PVA EXPO PRAHA
Beranových 667
199 00 Praha 9 – Letňany

info@pvaexpo.cz
www.pvaexpo.cz